

YSO600PB

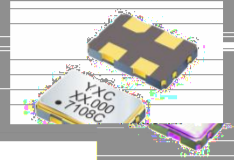


Applications

- Consumer
- Industrial

Features

- Fast Delivery
- Low Jitter Design with New-Developed IC
- PLL Circuit Provides Wide Frequency Range Application (1~200MHz)
- Package Size: 2.0*1.6, 2.5*2.0, 3.2*2.5, 4.0*3.2, 5.0*5.0, 6.0*6.0



Specifications (规格参数)

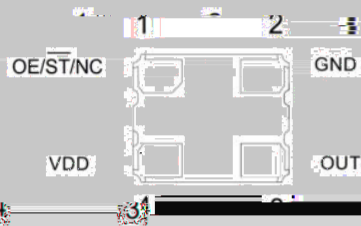
Item / Type	CMOS		
Supply Voltage 电源电压	1.8 V	2.5 V	3.3 V
Frequency Range 额定频率范围	1MHz ~ 125MHz	1MHz ~ 200MHz	1MHz ~ 200MHz
Supply Voltage Variation (VDD)10%	1.62V ~ 1.98V	2.25V ~ 2.75V	3.075V ~ 3.625V
Standby Current 待机电流			400uA
Current Consumption 消耗电流			35mA Max
Frequency Tolerance 频率偏差			±30ppm
Output Load 输出负载			15pF
Operating Temperature Range 工作温度			-40~+85°C, or specify
Storage Temperature Range 储存温度			-55~+150°C
Voltage VOH (Min.) / VOL (Max.) 输出电压			= 90%VDD / VOL = 10%VDD
Duty Cycle 占空比			45~55%
Rise Time/Fall Time 上升沿/下降沿			7ns Max
Start-up Time 启动时间			1.5~2.5ms
Phase Jitter [12 kHz ~ 20 MHz] 相位抖动			±0.2ps
Supply Current 消耗电流			See Below
Frequency Aging (at 25°C) 老化率			±3 ppm / year Max

VSO609DD



Pin Dimension (脚位尺寸)

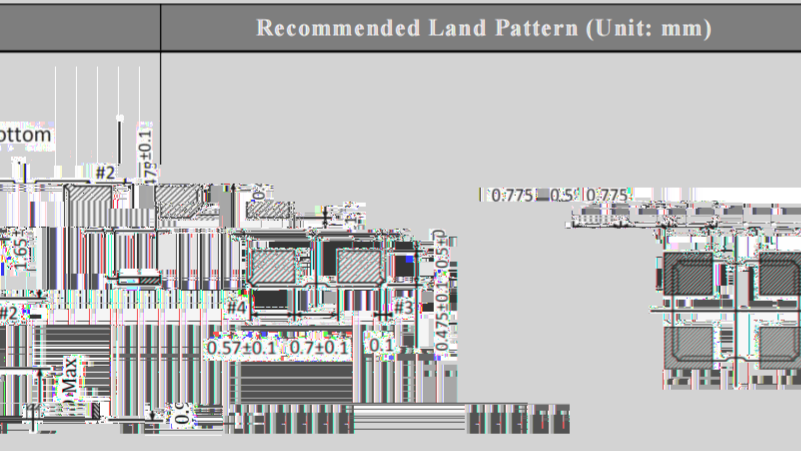
Pin Assignments



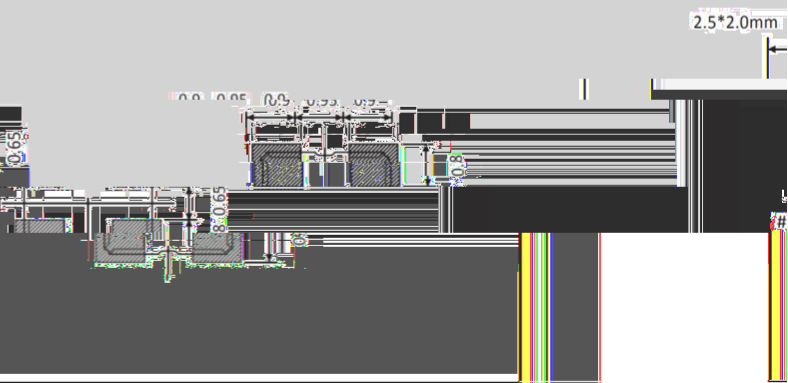
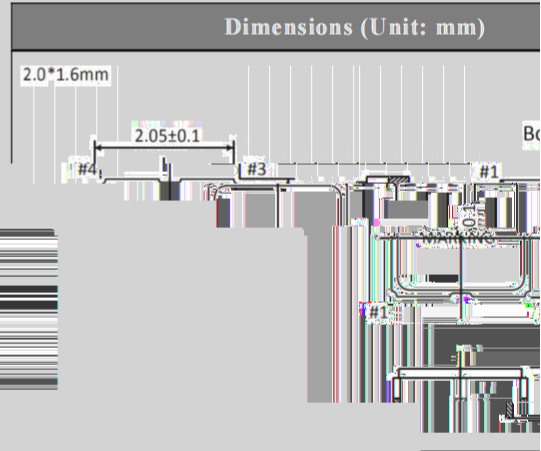
Pin	Symbol	Functionality
1	OE/ST/NC	Output Enable H: specified frequency output L: output is low. Specified frequency output stop. Standby: L: output is low. Device goes to sleep mode, supply current reduces to 400uA(Standby Current). No Connect: Pin 1 = VDD or Pin 1 is Open: Specified frequency output. Pin 1 has no-function.
2	GND	Power: Electrical ground
3	OUT	Output: Oscillator output
4	VDD	Power: Power supply voltage

Dimensions and Recommended Land Pattern (外观尺寸及推荐焊盘)

Recommended Land Pattern (Unit: mm)



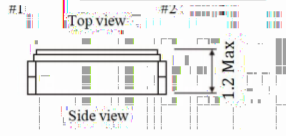
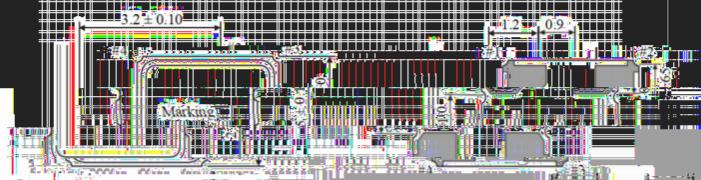
Dimensions (Unit: mm)



VSO600PP

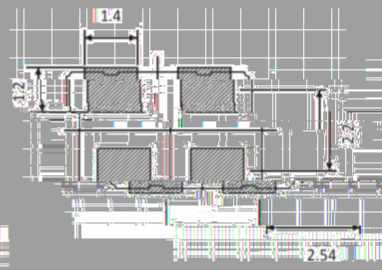


3.2±0.5mm

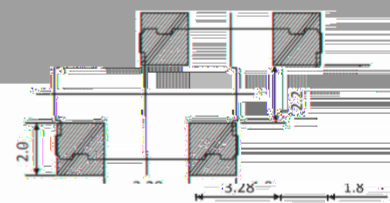
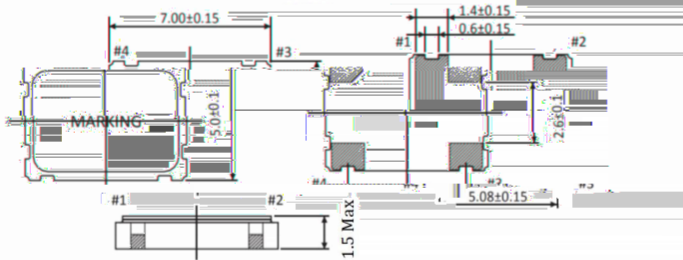


Bottom view

5.0±0.2mm



7.0±5.0mm





YSO600PR



Test Circuit (测试电路)

